

TRUE SUPPORT LINE

PIPE SUPPORT



90-1800

Product Description

True Support Pipe Supports are pipe/conduit support designed for use on all low slope roofing applications. Made from automotive grade nylon with a PPR base. Includes a 4-way water channel for proper drainage. Designed to support 5 different pipe sizes and up to 1,000 lbs. per unit.

Product Size	Packaging Info
•6" x 6" x 3"	•12 SS Zip ties
•.5 lb each	•12 units per case
	•147 cases per pallet

Advantages

- Supports multiple pipe sizes: 1/2", 3/4", 1", 1-1/2", 1-3/4", and 2"
- Includes Stainless Steel Zip Tie
- Compatible with all low slope roofing membranes: APP, SBS, TPO, PVC and EPOM



PIPE SUPPORT RISER

90-1801

Product Description

The Riser can be added to the top of the Pipe Support with simple snap technology for height extension



Product Size

- 3.5" base diameter, 2" extension
- .12 lb each

Packaging Info

- 12 units per case
- 200 cases per pallet



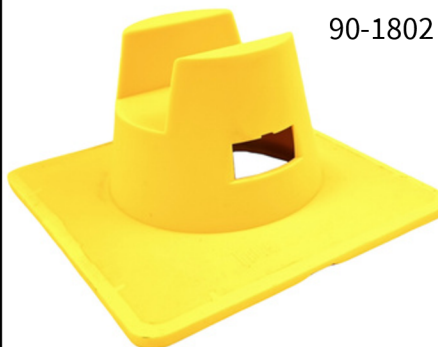
← Riser and Support Stacked

STRUT SUPPORT

90-1802

Product Description

Strut Support offers the same innovative design as the original Pipe Support but the top is designed for 12 ga strut Channel.

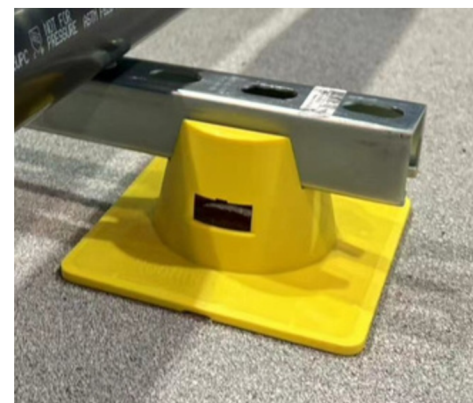


Product Size

- 6" x 6" x 3"
- .5 lb each

Packaging Info

- 12 SS Zip ties
- 12 units per case
- 147 cases per pallet



CAULKING GUN

Sku: 81-8220
Master Case Qty: 12



CAULKING GUN W/ PATENTED ON/OFF SWITCH

Sku: 81-8221
Inner Case Qty: 6
Master Case Qty: 12



HEAVY DUTY PRY BAR

Sku: 81-8214
Inner Case Qty: 10
Master Case Qty: 30



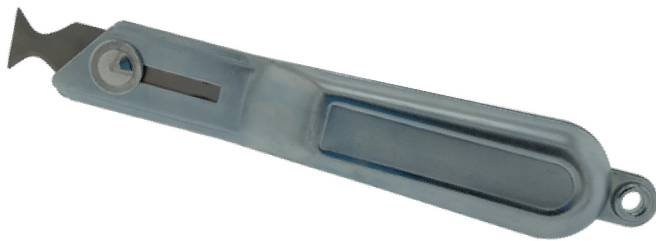
4" TELESCOPING MEASURING WHEEL

Sku: 81-8211
Master Case Qty: 4



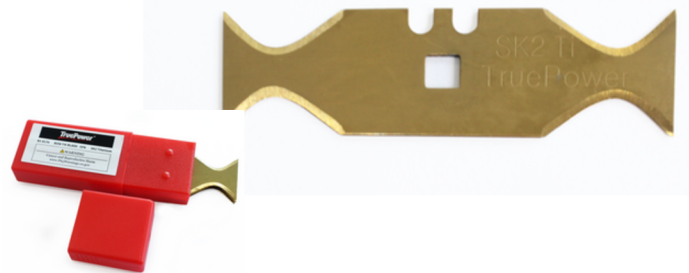
ROOFER'S KNIFE

Sku: 81-8108
Master Case Qty: 100



TITANIUM BOWTIE BLADES (TUBE OF 5 BLADES)

Sku: 81-8170
Color Box: 50 Tubes
Master Carton: 10 color boxes



QUICK CHANGE ROOFER'S KNIFE

Neon Yellow - Sku: 02-8103
Master Case Qty: 36
Inner Case Qty: 6



QUICK CHANGE ROOFER'S KNIFE

Bright Red - Sku: 02-8104
Master Case Qty: 36
Inner Case Qty: 6



9" ROLLER FRAME HEAVY DUTY HANDLE

Sku: 81-8192
Master Case Qty: 48



3PK ROLLER COVERS 9"

Sku: 81-8210
Master Case Qty: 32



12" ROLLER FRAME HEAVY DUTY HANDLE

Sku: 81-8190
Master Case Qty: 25



3PK ROLLER COVERS 12"

Sku: 81-8290
Master Case Qty: 30



2" CHIP BRUSH

Sku: 81-8196
Inner Case Qty: 12
Master Case Qty: 360



3" CHIP BRUSH

Sku: 81-8197
Inner Case Qty: 24
Master Case Qty: 288



4" CHIP BRUSH

Sku: 81-8198
Inner Case Qty: 12
Master Case Qty: 360



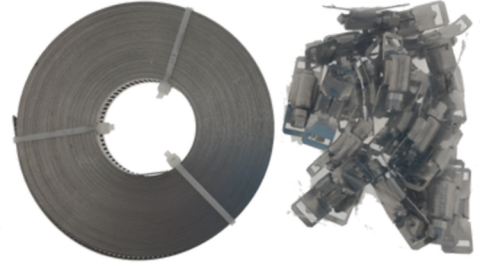
1-6" STAINLESS STEEL PIPE CLAMP

Sku: 81-8117
Master Case Qty: 100



100' STAINLESS STEEL STRAP W/ 50 CLAMPS

Sku: 81-8116
Master Case Qty: 5



10" STAINLESS STEEL SCISSORS

Sku: 81-8173
Inner Case Qty: 10
Master Case Qty: 40



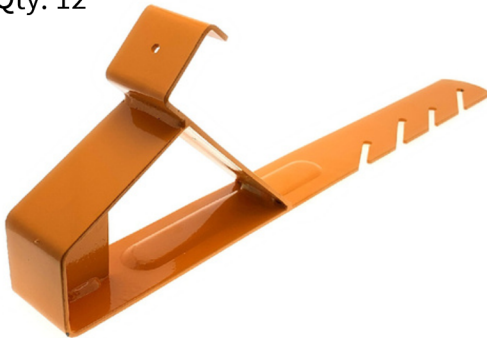
8" STAINLESS STEEL SCISSORS

Sku: 81-8172
Inner Case Qty: 10
Master Case Qty: 40



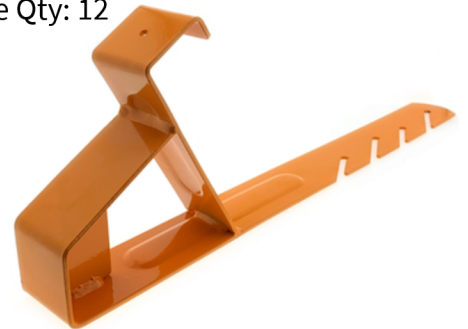
45° ROOF BRACKET

Sku: 81-8128
Master Case Qty: 12



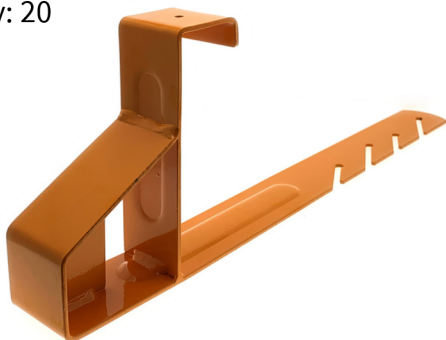
60° ROOF BRACKET

Sku: 81-8129
Master Case Qty: 12



90° ROOF BRACKET

Sku: 81-8130
Master Case Qty: 20



HAMMER TACKER STAPLE PUSHER

Sku: 02-0640
Case Qty: 25 Bags



HD HAMMER TACKER STAPLE PUSHER

Sku: 02-0642

Case Qty: 25 Bags



**DON'T SEE A PRODUCT YOU'RE
LOOKING FOR? ASK! IF YOU BUY
IN BULK, WE CAN BRING IT IN
FOR YOU**

Additional services we offer: Sourcing
and private labelling e-mail:
sourcing@ginodevelopment.com